

IMPACT

Feb Edition 2018

NEWSLETTER OF THE WELLINGTON PHOTOGRAPHIC SOCIETY

The Digital edition

PAGE 6

Inspiration

A collection of works that can help inspire you

PAGE 14

2018 Calendar

Highlights from the 2018 programme during Feb and May

PAGE 13

My Break

What I've been up to over the Christmas break

PAGE 26

Welcome

A short intro to Wellington Photographic Society.





Prez Says

WHAT'S IN STORE FOR THIS YEAR

Welcome back to what we believe will be an exciting year of photography with Wellington Photographic Society. Since our last meeting of the year, we have had the chance to examine the needs and wants of the membership as revealed in the survey that Shannon Doyle conducted towards the end of last year. Thanks to all of you who took the time and trouble to give us much valuable feedback. Then a small team, convened by our Programme Co-ordinator, Kerry Whittaker, met to devise an ambitious programme of varied activities for 2018.

We start off this week on Thursday with “*The Presidents’ Surprise*” which will involve a photographic walk around the area surrounding the TTC clubrooms, completing a fun series of practical exercises. So bring your camera and shoes for walking!

This year, we have tried to build on having even more member involvement with hands-on activities coupled with inspiring speakers. Field trips will give you the chance to develop new skills and meet more of your fellow members.

Informal sharing of images will be encouraged through *Monthly Photo topics*, which will run every month with one or two themes to explore. It’s not a judged competition, merely the chance to share how you and other club members approach the same topic in a variety of ways. We are also privileged to host the Wellington Interclub Print Competition in August, and some of the same themes will be used in the Monthly Photo topics.

We will have our regular print and projected image competitions and our annual exhibition toward the end of the year. We also hope to increase our participation in the various PSNZ interclub competitions, the closing dates for which are fast approaching.

However, the success of any club is best measured by the enthusiastic participation of its members. So I do urge you all to participate to the full in the club this year. If you have expertise, please share it; if you have views, we want to hear them; do make the effort to attend meetings, workshops and field trips and make yourself known to new members and others you may not know.

Glen Innes
WPS President

Left Image - *Matilda*

IMPACT

NEWSLETTER

PRESIDENT

Glen Innes
president@wps.org.nz

EDITOR / COMMS

Shannon Doyle
impact@wps.org.nz

SECRETARY

Brett Jennings
secretary@wps.org.nz

TREASURER

Philip Dyer
treasurer@wps.org.nz

PROGRAMME ADMIN

Kerry Whittaker
programme@wps.org.nz

COMPETITION ADMIN

Julie Brixton
competitions@wps.org.nz

WEBMASTER

Brendon Lang
webmaster@wps.org.nz

MEMBERSHIP SEC

Susan Mahon
memberships@wps.org.nz

INTRODUCTION

We make this newsletter to encourage members to get involved in club and local events, to demonstrate the great work happening and to show you how many reasons there are to be part of the society. Wellington Photographic Society has to the best of it's knowledge sourced accurate information, and cannot be held responsible for any errors or misinformation

COPYRIGHT

Copyright of the content of this newsletter is owned by the Wellington Photographic Society and it's contributors. The design and layout is copyrighted work by Digital Ninja Design and cannot be reproduced without permission. Copyright of the images is owned by the photographer named in the credit and images may not be reproduced without permission.

CONTACT US

Address

Wellington Photographic Society
4 Moncrieff St, Mt Victoria
Wellington

Contact

W : wps.org.nz
E : secretary@wps.org.nz

SPONSORS

We would like to welcome our new sponsors Nikau Foundation and Wellington Community Trust for coming on board, along with longtime partners Wellington Photographic Supplies. With these sponsors in place it allows us to achieve our goals and enables us to reach more of the Wellington community. Sponsors allow the society to continue to expand it's profile and serve our members with a high quality programme.

Principle Partners



Cover Image - Peter Rodgers

CONTENTS

WHERE TO FIND ALL THE GOOD STUFF

05

CONTENT & CONTACTS

Mi, tenim fugit, es estiusa loreiand nctetiand ncteta cusam velique vollest earumqtiam ru asperen nitiam re velibus, quiand nct, es lorem ipsum estiusa loretet ab invere.

06

INSPIRATION

These are a collection of works that can help inspire your creative possibilities, collected from around the web, and via word of mouth.

08

NEWS & LINKS

A small list of Photo News & Links and events.

10

WHAT'S ON

Exhibitions / Meetings & other notable events in the Wellington region.

13

WHAT I'VE BEEN DOING

A short write up by Glen Innes of his holiday photography activities.

14

OUR 2018 PROGRAMME

Details of our 2018 programme, dates and times for events from February to May.

16

MONTHLY PHOTO TOPICS

Starting in 2018 we are asking our members to submit images around 2 monthly topics.

18

'18 COMPETITION SUMMARY

All the competitions details for the 2018 competition year.

24

A QUICK TIP

A quick tip from Glen Innes about some landscapes focusing techniques he has discovered.

26

WELCOME

A short welcome and introduction to our new members

28

IMPACT SUBMISSIONS

Details on how to get images and articles submitted to the Impact newsletter.

Inspiration

*These are a collection of works that can help inspire your creative possibilities,
collected from around the web, and via word of mouth.*



WHY PHOTOGRAPHERS SHOULD COLLABORATE MORE

By virtue of the process, photography can be a rather solitary thing. And while there's nothing wrong with working alone, there are many benefits to collaborating with others. [Link](#)



THROUGH THE LENS - DANIEL RUEDA AND ANNA DEVÍS

Through The Lens' is a web docu-series presented by ADORAMA. It is a look at the evolving aesthetic of photography as seen through this generation's creator class. [Link](#)



SPOTLIGHT: NYC DANCE PROJECT

Ken Browar & Deborah Ory are a husband and wife photography team and the creators of NYC Dance Project. A collaboration project, merging their experiences and passion to create unique and beautiful portraits. [Link](#)



BEYOND THE HORIZON

The inaugural Canon Personal Project Grant enabled Richard Robinson to photograph the far reaches of New Zealand's ocean territory. [Link](#)



Image Right - J.T Salmon



News & Links

A small list of Photo News & Links and events,

Click on images to follow links



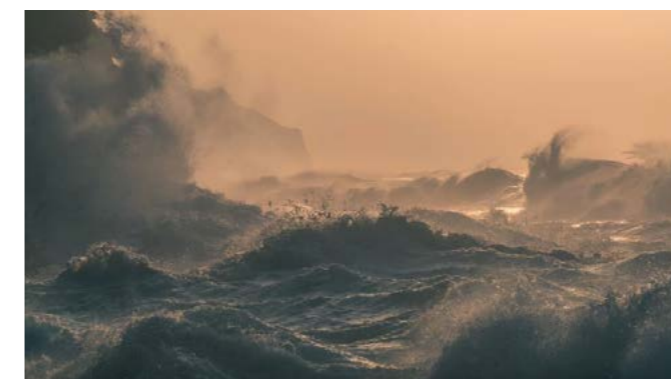
NZ PHOTOGRAPHER OF THE YEAR 2017

From 65 finalists, there were nine winners in the New Zealand Geographic Photographer of the Year. Behold, the finest frames of New Zealand's environment and society in 2017.



A TALE OF TWO MOONS: PETER LIK'S PHOTOGRAPHS CALLED OUT BY SCIENCE

For me and many photographers that I know, composing and post-processing is fine, even needed in many cases. The thing that we all seem to get wrapped around the axle about is when a fellow artist is not entirely forthcoming about how a work was produced.



SAVING AN IMAGE USING SPLIT TONING IN LIGHTROOM

Sometimes, you'll come home with an image that seems rather unremarkable, but when you play with it for a bit in Lightroom, it suddenly becomes something you hadn't envisioned when you first shot it. This great video will show you how to split toning saved an image



INTIMATE GLIMPSES OF ORDINARY LIFE IN IRAN

This month marks the fortieth anniversary of the student protests that precipitated the Iranian Revolution. In the years after Ayatollah Khomeini took power in 1979 and declared an Islamic Republic

What's on this Month

WHEN: FEBRUARY WHERE: WELLINGTON



Lantern Festival

Lantern Festival is one of the Wellington Night Market's annual events. Over the past three years, we have transformed Lower Cuba Street into a wonderland lined with hundreds of handmade lanterns.

Bring your friends, family and join us in celebrating the most important festival in the Chinese calendar. Let's celebrate Lantern Festival and Chinese New Year in Wellington style!!!

16-17 Feb - Lower Cuba Street, Wellington
[Website](#)



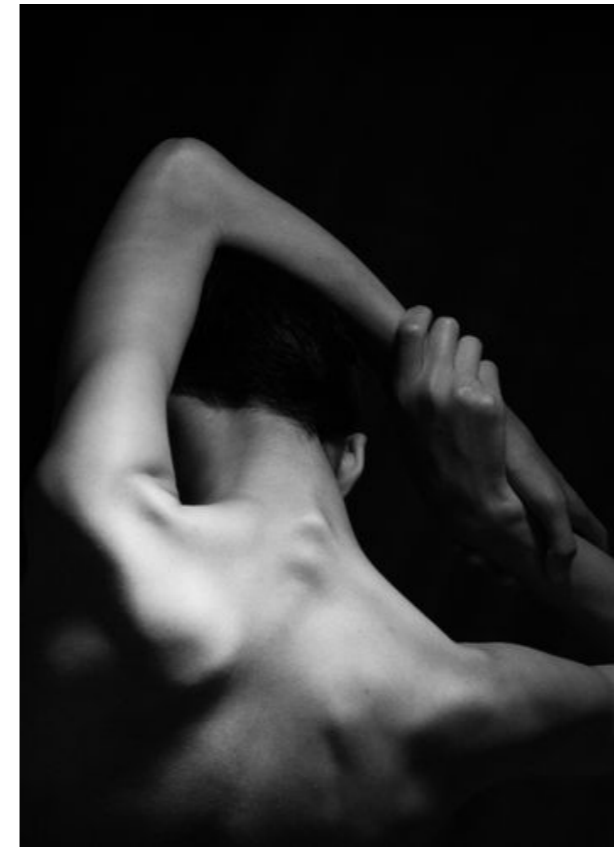
Island Bay Festival

There's more things to see and do than you can shake a stick at. Delicious eats, great sounds and all the fun of a family fun day out. If an early morning swim floats your boat then sign up for the Tapu Te Ranga dip - either swim to/from or there and back.

There's more things to see and do than you can shake a stick at. Delicious eats, great sounds and all the fun of a family fun day out.

Sun 11 Feb - Shorland park, Island Bay
[Website](#)

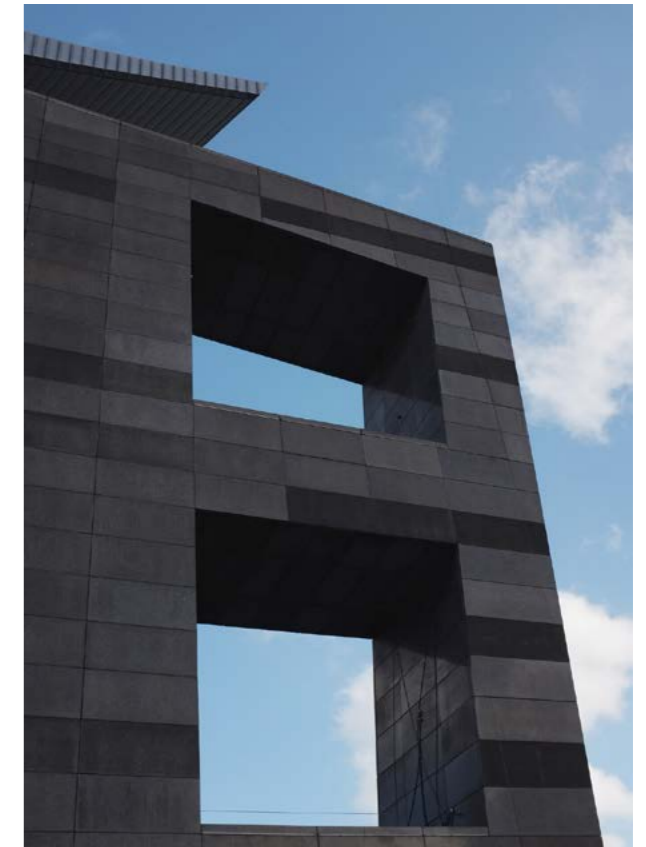
“ We have a great programme ahead, stay tuned for what is sure to great 2018.



Oculus Exhibition

Looking through a lens allows the viewer to see through the Photographer's eye. This exhibition brings together the work of six Wellington photographers. Each project showcases a way of looking at the world that moves beyond the ordinary snapshot.

Sun 27 Feb - Sun 4 Mar,
Thistle Hall, 293 Cuba St
[Website](#)



Getting to Our Place

A documentary which chronicles the history of the creation of the Museum of New Zealand Te Papa Tongarewa to mark 20 years since its official opening on 14 January 1998.

“Over almost three years, from 1996 to 1998, [Gaylene Preston and Anna Cottrell] shot 600 hours of video. Most simply it is a fascinating look behind the scenes of a historic project.

Nga Taonga Sound & Vision, 84 Taranaki St
Thurs 8 Feb – Sat 17 Feb | [Website](#)



What I've Been Doing Over the Break

STORY & PHOTOGRAPHY: GLEN INNES

A project I have just put to bed is a photo book entitled, 'Fairlie Remembers' which I compiled with Rosemary Moran, a former work colleague from Mackenzie District Council who is very active in the Mackenzie District Local History Archive. As part of the 150-year celebrations of the establishment of the township of Fairlie in 1866, Rosemary and I decided to create an oral history archive of the memories some of the long-term residents of the town. Having completed that, we followed it up with a book comprising selected anecdotes from each participant, a brief biography, my photographic portraits of them today and images of their past lives. It involved some training in oral history techniques, quite a bit of hard work but a tremendous amount of satisfaction in bringing it all together. Closer to home, a photo book about the 2017 football season of a local schoolboy team is almost complete and a gift book about the wedding of a family friend is next on the list.

Apart from that I have covered some local club cricket, the nearly completed house rebuild of a friend and one of the Summer Concerts at the soundshell and undertaken weekly assignments as part of the P52 Improve Your Photography Group.

I look forward to you all joining us in an exciting programme of activity for 2018.

Left Image - *Scarf*

See more of Glen's work [here](#)

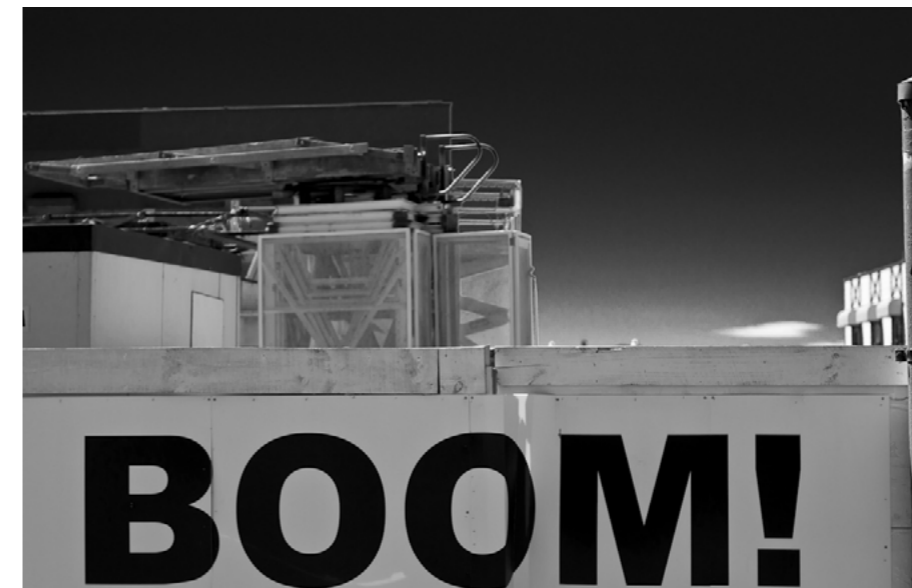
Our 2018 Programme

HIGHLIGHTS FROM THE 2018 PROGRAMME - FEBRUARY - MAY

Forensic Photography

If you're an avid watcher of CSI or enjoy reading a good crime mystery from time to time, tonight's meeting will be of particular interest. Constable Jane Dunn (Gowans) will talk about her work in Forensic Imaging for the New Zealand Police.

February 22



24hrs In Wellington

24 Hours in Wellington' is a WPS organised photojournalism event planned in celebration of the society's 125th anniversary.

The event will take place from 4pm Friday - 4pm Saturday. More details about the event, how to enrol, are available on the WPS website.

March 23 & 24



Landscape Technique & Composition

Join us for an evening all about landscape photography. We will be discussing both composition and important techniques to get you out taking brilliant landscapes of your own. This will be followed by Field trip on March the 11th (details TBC)

Speaker: *March 8*
Field Trip: *March 11*

Meet Up: Color Movement

Colour, Movement, and Fun - all the ingredients for a great photo shoot. Although this is also referred to as the Color Run, there is no run/race involved in this particular event. But there will be lots of dance, colour, and movement.

Sunday *March 18*

Macro Photography Techniques

Macro photography truly is a unique genre of photography. Join us for a talk focusing on techniques and how to capture great macro images of your own

Speaker: *April 12*
Field Trip: *April 15*

Projected Image Competition

This is an in-house Wellington Photographic Society annual competition and is open for submissions by all WPS members. This is a fun in-house competition and we encourage all members to submit their images.

Thursday *April 26*

Portrait Photography: Theory and Practice

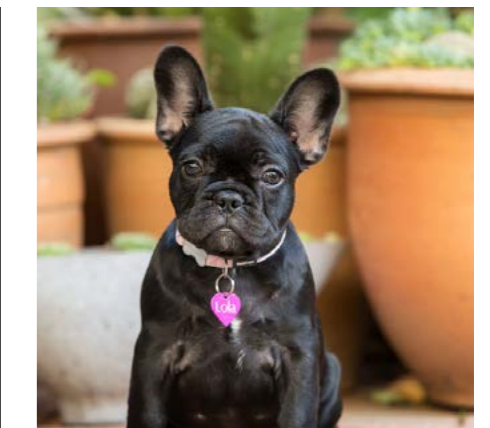
Through practical exercises and demonstrations, we will showcase some of the key concepts of portrait photography including lighting, set dressing, posing and how to set up your own home studio.

Meeting: *May 10*
Workshop: *May 20*

Jo Moore: Pet Photography

Jo Moore's commercial business goes beyond wedding and event photography to capturing the energy and character of your beloved pet. Jo also uses her photography to promote ideas about conservation and animal welfare.

Meeting: *May 24*





Monthly Photo Topics

HOW TO TAKE PART AND GET INVOLVED

Starting in 2018 we are asking our members to submit images around 2 monthly topics. This is a opportunity to share images on a more informal basis and get everyone more involved in sharing images.

Send your favourite 3 pics to sharemypics@wps.org.nz by the last day of the month. All submissions will be included in a short presentation of images at the first club meeting of the following month.

The purpose of the Monthly Photo Topics is to get club members to take new pictures, not to find images that satisfy the assignment in existing photo files. So get up, get out there, and shoot away.

The Monthly Photo Topics for 2018 are:

- February – *Seen on the Street* | *Hats*
- March – *Flowing Water* | *Curves*
- April – *A Closer Look at Things* | *Minimal*
- May – *Standing Out* | *Frame Within a Frame*
- June – *On the Move* | *Waiting*
- July – *Food* | *Pets*
- August – *Architecture* | *People*
- September – *Wedding or Event* | *Pattern or Shape*
- October – *Landscape* | *Wildlife*
- November – *Impressionist* | *Walkabout*

Image Left - Sushrutha Metikurke

2018 Competitions Summary

WRITER: JULIE BRIXTON

All the competitions details for the 2018 competition year.

FEBRUARY/MARCH 2018

Wiltshire Cup & Bledisloe Cup

These two salons are run by the Photographic Society of New Zealand (PSNZ) and are open to all Photographic Clubs who are members of the PSNZ:

1. Wiltshire Cup - 4 diverse digital images, any subject, all must be by a different photographer
2. Bledisloe Cup – a set of 4 prints (each print must advance the other prints in the set), all by a different photographer and must have been exposed in New Zealand.

The 4 images/prints can only be submitted by a Society/Club, no individual submissions are accepted.

Dates:

- **Bledisloe** – all initial digital images for selection to be received by competitions@wps.org.nz by midnight 1 March 2018.
- **Wiltshire** – all digital images for selection to be submitted to competitions@wps.org.nz by midnight 9 March 2018.

APRIL 2018

Projected Image Competition

This is an in-house Wellington Photographic Society annual competition and is open for submissions by all WPS members. This is a fun in-house competition and we encourage all members to submit their images.

Categories: Open

Entry Specificatons:

- Limited to 3 images per member
- Image size: Full Resolution - under 5mb · Submissions by email to competitions@wps.org.nz
- Each image must be named as follows: Name of Image/Your First name/Surname

The close off date for receipt of images is 26 March 2018

The final presentation and judging will take place at the Club meeting on 26 April 2018.

Find out more at www.wps.org.nz



“2018 is an exciting year for competitions,
especially with us hosting the Annual
Interclub in August”



The Wellington Interclub Print Competition - August 2018

This Competition is a friendly competition between all six Photography Clubs in the Wellington Region. It is a popular event and this year we have the honour of hosting this on 23 August 2018 at our Club Rooms. Guests from all six Clubs will mingle over drinks and nibbles before the judging starts.

The topics are:

- Seen on the Street
- Hats
- Flowing Water
- Curves
- A closer look at things
- Minimal
- Standing Out
- Frame within a Frame
- On the Move
- Waiting

Rules:

- Three images per subject · Initial selection, please submit digitally to competitions@wps.org.nz
- Each image must be named: Title/InterClub/Your Name
- Images must be emailed by:
 - *Topics 1-5 – midnight 21 June 2018*
 - *Topics 6-10 – midnight 05 July 2018*

All selected images will be required to be printed and matted –maximum standard 50cm by 40cm. Titles and names are not to be visible on the front of the print.

WPS ANNUAL PRINT COMPETITION - JULY 2018

Categories are yet to be advised.

Entry Specifications:

- Limited to 3 prints per member per category
- Prints must not have been used in any previous WPS competition
- Each print is to be entered into one category only
- Matting of entries is optional – Maximum matt size: 16” x 20” (406 mm x 508 mm). Not framed. If prints is not matted it is recommended that they are printed with a white border for display purposes.
- Print size – any size within the matt definition.
- Each print is to be submitted with the official entry form detailing your name, name of image and hanging details.
- Prints to be submitted to the Competition Administrator by 3 September 2018 to enable judging to take place.

The Annual Print Competition Judge presentations and announcements will be at the Club Meeting of 27 September 2018. All prints will be on display for viewing.

Categories for this competition will be published in the Impact magazine.

Entry forms will be detailed in July 2018 and published in the July/August Impact



Image Above - Walking into the Sea



A Quick Tip

You have discovered this ideal landscape shot with good foreground interest, plus intriguing middle ground and background. How do you keep everything that's important to the shot acceptably sharp?

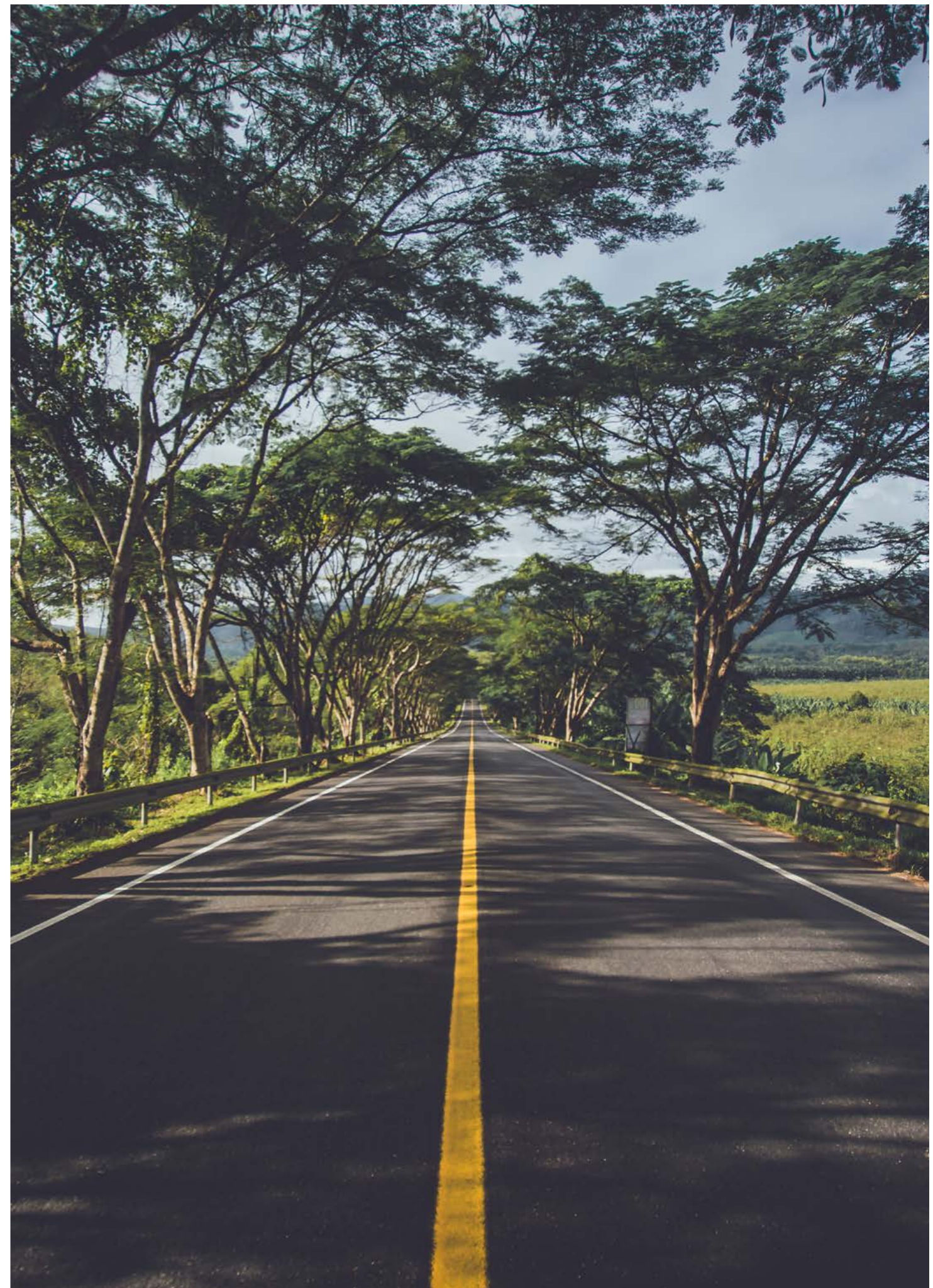
You have set up on a tripod with a small aperture, the mirror is locked up and you are using either a remote shutter release or delayed shutter setting. But where do you focus to keep the foreground sharp?

According to John Greengro, one of my favourite photographic tutors, there is a rule of thumb that works. Take the distance to from the camera to your nearest point that you want to be in focus and then double it. That should be the point on which you focus.

So, if you have some interesting flowers in the foreground of your shot that are 3m away from the camera, set your focus at 6m. Try it for yourself and see how it works!

Glen Innes

Read more about [DOF here](#)



Welcome to the Club

A SHORT INTRODUCTION TO WELLINGTON PHOTOGRAPHIC SOCIETY

As a fellow member of the Wellington Photographic Society (WPS), I would like to personally welcome you as a member of the club. WPS encourages the study and practice of photography. It provides high quality stimulating events, opportunities for learning and promotes an appreciation of the aesthetics of photography.

Our meetings are run on a fairly informal basis and you can be sure to learn something new at every meeting – whether you have been interested in photography for years or just starting out.

The programme of meetings and activities for the year are regularly updated and can be found by going to www.wps.org.nz. At our meetings, you get the chance to listen to and meet some of New Zealand's established and up & coming photographers. You also have the opportunity to share your own photography and to receive feedback from other members.

A number of field trips are planned throughout the year where members get together at different locations and have fun making photographs.

At our meetings you will get the chance to listen to and meet some of New Zealand's established and up and coming photographers. You also have the opportunity to display your own work and to receive feedback and encouragement from other members.

THE AIM OF THE SOCIETY IS TO ENCOURAGE PARTICIPATION AND HELP MEMBERS DEVELOP CONFIDENCE IN THEIR PHOTOGRAPHY. WE PROVIDE A DIVERSE PROGRAMME OF ACTIVITIES AND WE ARE SURE YOU WILL FIND THAT THE SOCIETY HAS PLENTY TO OFFER YOU.

Overall we want our members to participate in events, come to our meetings, learn new techniques, get inspired with new ideas and above all have an enjoyable experience.

If you have any questions, please don't hesitate to get in contact with any of our Committee Members and we look forward to seeing you at a meeting soon.

Shannon Doyle
WPS Comms

Image Right - Donna Jennings

Read more at www.wps.org.nz





Impact Submissions

A GUIDE TO SUBMITTING IMAGES & IDEAS

If you would like to submit images and articles to Impact, please follow the below guidelines. These are the basic guidelines for submitting all competition images as well during the calendar year.

Submissions email: wpsimpact@gmail.com

- **Images:** Can be any resolution, but file size must be below 3mb
- **Other images Specs:** High Resolution, Srgb, 300ppi
- Please name files with your first name and last name and image title.
- **Image description** – Descriptions/titles should be concise and be nothing more than a title or a few words which describe the image.
- **Submission Date:** No later than the 27th at 5pm

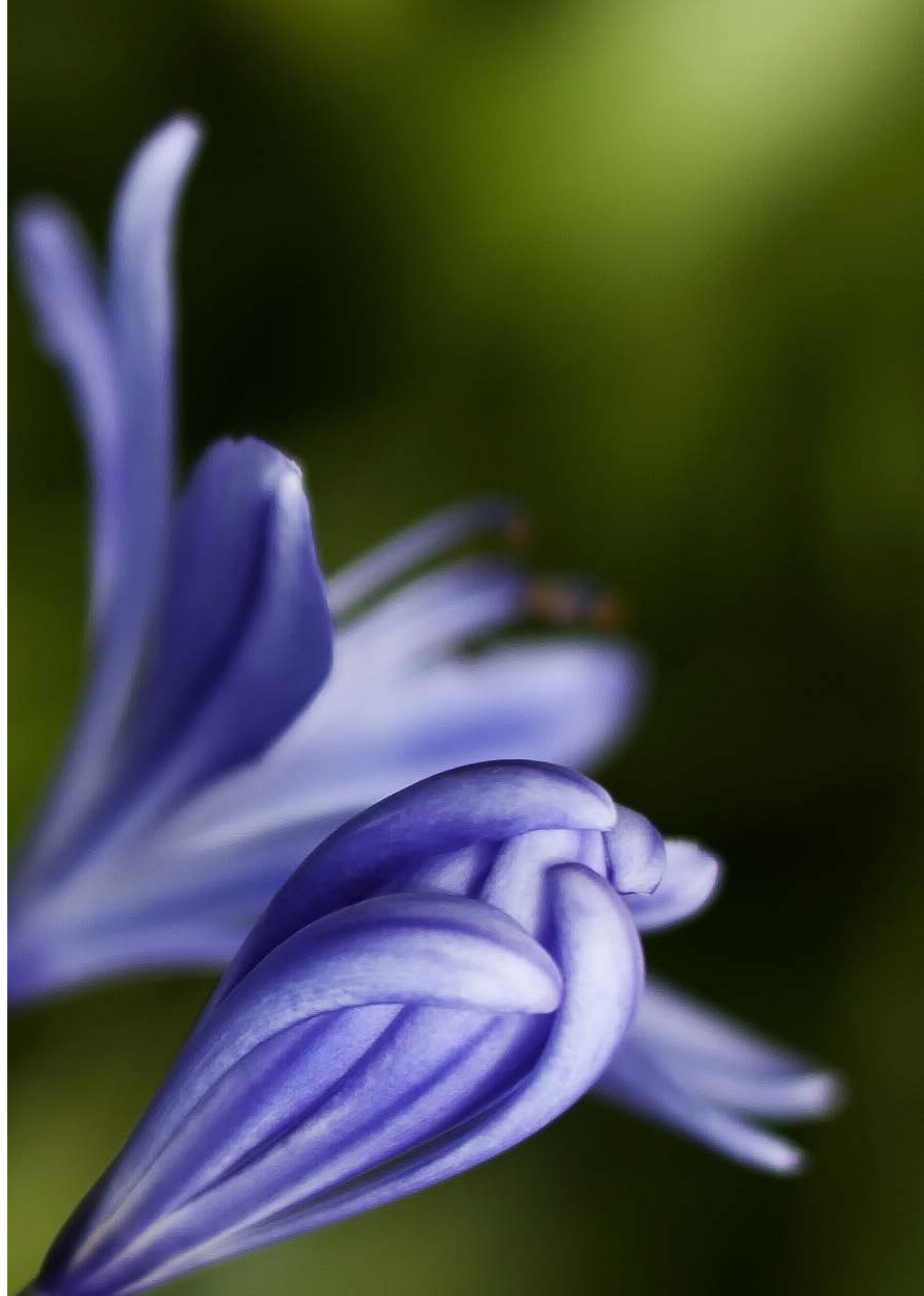
Guest Posting

I would like to maintain a high level of quality in the posts published in this Newsletter. If you would like to post anything, feel free to drop me a line with your article idea, and we can see if it's a fit. Images in guest posts can be linked back to their original source, and you'll have an "About the author" section at the bottom of the post.

If you have any questions regarding the submission process and/or an idea you would like to run past me, feel free to send me an email.

Regards,
Shannon Doyle
Impact Editor

Image Right - Mark Berger



WPS

HELPING PHOTOGRAPHERS DEVELOP SINCE 1892



WPS.ORG.NZ

 facebook.com/WellingtonPhotographicSociety

 twitter.com/WPS_Wellington

 instagram.com/wgtnphotographicsociety

We are supported by these
Wonderful Wellington
Companies



**WELLINGTON
PHOTOGRAPHIC SOCIETY**

ADDRESS:
WELLINGTON PHOTOGRAPHIC SOCIETY
4 MONCRIEFF ST, MT VICTORIA
WELLINGTON

CONTACT:
W: WPS.ORG.NZ
E: SECRETARY@WPS.ORG.NZ